

San Joaquin Valley Interregional Goods Movement Plan

presented to

2011 FALL POLICY CONFERENCE

presented by

Cambridge Systematics, Inc.

Fehr & Peers

The Tioga Group, Inc.

Jock O'Connell



June 30, 2011

Transportation leadership you can trust.



What is the San Joaquin Valley Interregional Goods Movement Plan?

- The eight San Joaquin Valley Regional Planning Agencies', together with Caltrans, are beginning the development of the *San Joaquin Valley Interregional Goods Movement Plan*. This project aims to create a prioritized goods movement investment plan for the multimodal infrastructure of the entire San Joaquin Valley –including its highways and roadways, rail facilities, air cargo facilities, intermodal centers, and ties to inland and marine ports. In addition to creating a blueprint for future investment into the region's goods movement system, the project will:

What is the San Joaquin Valley Interregional Goods Movement Plan?

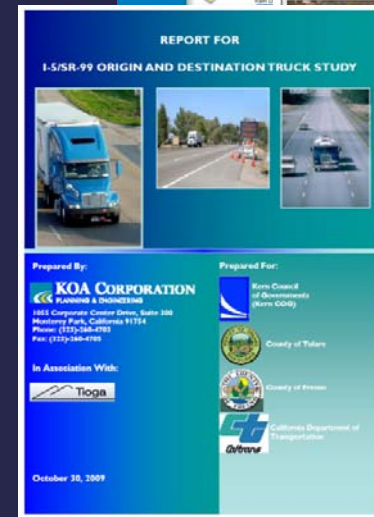
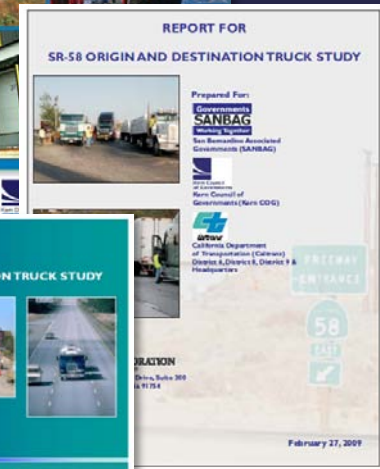
- **Work with regional freight stakeholder to understand the issues, challenges, bottlenecks, and opportunities of the Valley's multi-modal goods movement system,**
- **Assess supply chain and logistics trends and how they will impact goods movement in the future,**
- **Create a prioritized investment plan of project improvements and strategies to increase the efficiency and reliability of the region's goods movement system, and**
- **Contribute to economic development, strong industries, and environmental health throughout the entire San Joaquin Valley.**

Project Outcomes

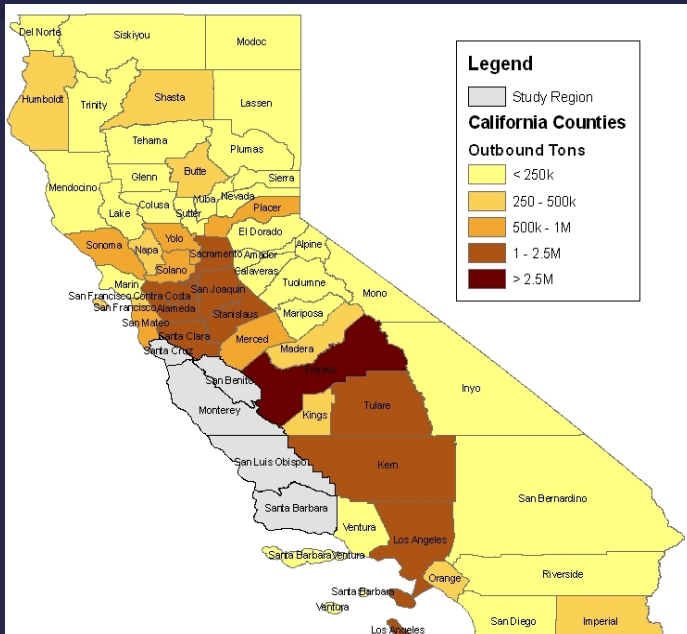
- **A clear, data-driven process to select projects, including multimodal performance measures – maximize benefits**
- **A ranked, multimodal project list that represents the regional Stakeholders' combined vision – “Efficiency/Economy/Environment”**
- **Strategies that build on regional strengths/address regional competitiveness needs**
 - » Short-haul rail service to serve regional markets
 - » Full implementation of SR-99 Improvements
 - » East-West corridor connectivity
- **Funding and implementation strategy**
 - » Public-private partnerships
 - » Potential Federal and state funding sources
 - » Institutional arrangements

Background Materials

- » San Joaquin Valley Regional Goods Movement Action Plan 2007
- » SR 58 Origin-Destination Truck Study
- » SR 223, 166, 119, 46 and 65 Truck Origin and Destination Study
- » Central Stanislaus Freight Study
- » State Route 99 Business Plan
- » California Inter-Regional Intermodal System Study, Phase I and II
- » SR 99/I-5 Origin-Destination Truck Study
- » SACOG Goods Movement Study and Goods Movement Action Plan (3 phases)
- » East Side Business Plan (Short Haul rail)



Other Ongoing Events & Efforts



- » **Federal Re-authorization**
- » **West Coast Corridor Coalition Efforts (e.g. Marine Highways, clean corridor concepts)**
- » **California Inter-regional Blueprint**
- » **CA Statewide Rail Plan**
- » **Statewide Goods Movement Action Plan Update**
- » **SCAG Regional Goods Movement Study**
- » **AMBAG Commodity Flows Study**

SOUTHERN CALIFORNIA ASSOCIATION OF GOVERNMENTS

Contact Us | Direct

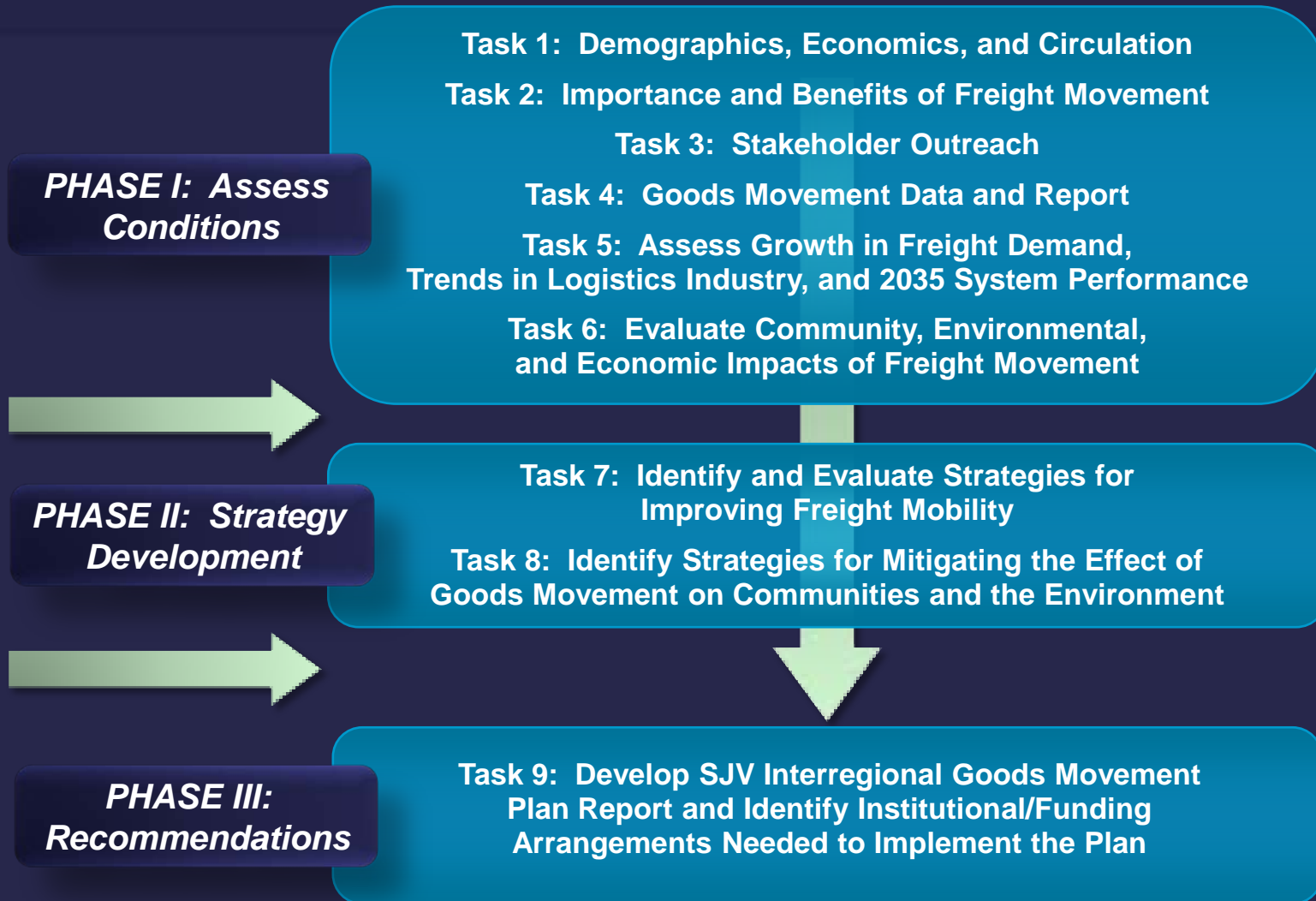
Home About Us What's New Committees Meeting Agendas Doing Business

PROGRAMS & PROJECTS

- Compass Blueprint
- Clean Cities
- Environment
- Housing
- Local Profiles
- Overall Work Program

Comprehensive Regional Goods Movement Plan and Implementation Strategy

Three-Phased Project Approach

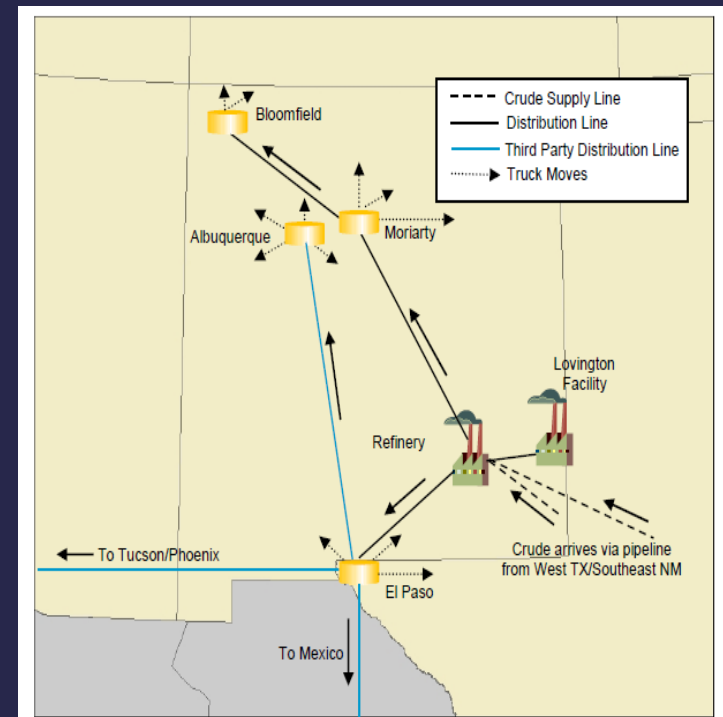


Phase I

SJV Infrastructure, Commodity Profile, and Key Issues

Deliverables:

- **Commodity Flow Profile (2010 and 2035)**
 - » Volumes and types of commodities
 - » Multimodal flows
- **Industry Profiles**
 - » Infrastructure needs of key industries
- **Identify current (2010) and future (2035) constraints and deficiencies**
 - » Physical
 - » Operational
 - » institutional



Phase I

Stakeholder Advisory Meeting, Sept 26, 2011

Issues Identified

- **Infrastructure issues** – insufficient roads or rail lines, bottlenecks and chokepoints, or dangerous / unsafe conditions.
- **Operational issues** – focus on systems that manage or coordinate transportation system performance and including issues such as truck routing patterns, traffic control programs, and rail / highway grade crossings.
- **Institutional issues** – focus on regulatory and system governance issues, such as air quality and environmental regulations.



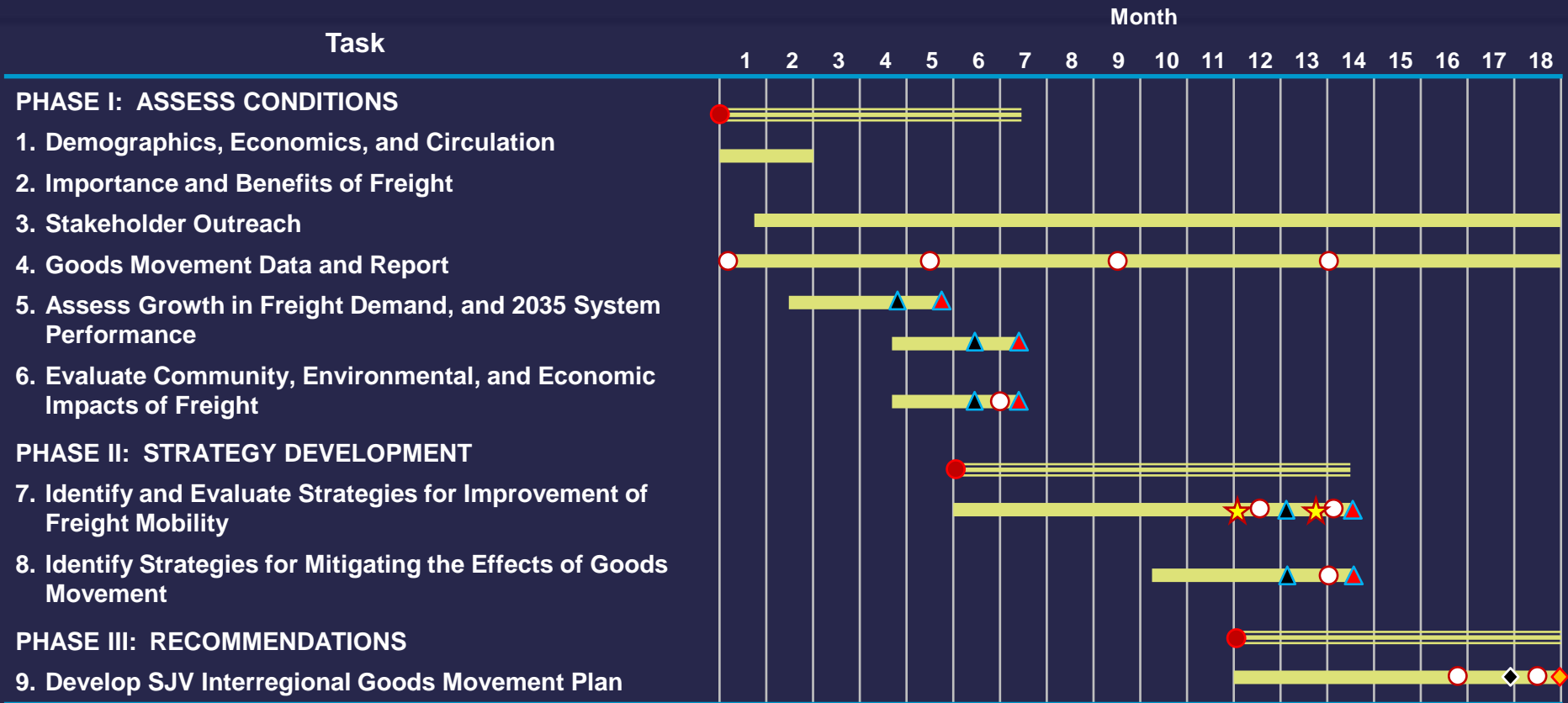
Phase I

Stakeholder Advisory Meeting, Sept 26, 2011

Stakeholder Advisory Committee Kickoff Meeting Attendees

A.C. Trucking	Kern Council of Governments
Air Resources Board	Kern County Economic Development Corporation
Auto Club of Southern California	Kern County Public Works
California Department of Food and Agriculture	Kings County Association of Governments
California Trucking Association	Kings County Economic Development Corporation
Castle Airport	Leprino Foods
Center for Agricultural Business, California State University, Fresno	Merced County Economic Development Corporation
Center for International Trade Development	Nisei Farmers League
Central California Traction Company	Port of Oakland
City of Fresno Department of Development and Resource Management	RBT Inc.
City of Fresno Public Works Department	San Joaquin Farm Bureau Federation
City of Los Banos	San Joaquin Refining Co., Inc.
City of Merced	San Joaquin Valley Air Pollution Control District
City of Shafter	Stanislaus Council of Governments
City of Stockton	Stanislaus County
Coalition for Clean Air	Union Pacific Railroad
County of Fresno	United States Department of Agriculture - Rural Development
FHWA	University of the Pacific
Fresno Council of Governments	

Entire Project Schedule



- ★ Stakeholder Workshops
- Working Group Meeting
- Stakeholder Advisory Meeting
- △ Draft Technical Memorandum
- △ Final Technical Memorandum
- ◇ Draft Final SJV Interregional Goods Movement Plan
- ◆ Final SJV Interregional Goods Movement Plan
- ≡ Phase Timeline
- Task Timeline

**THANK YOU
&
QUESTIONS**